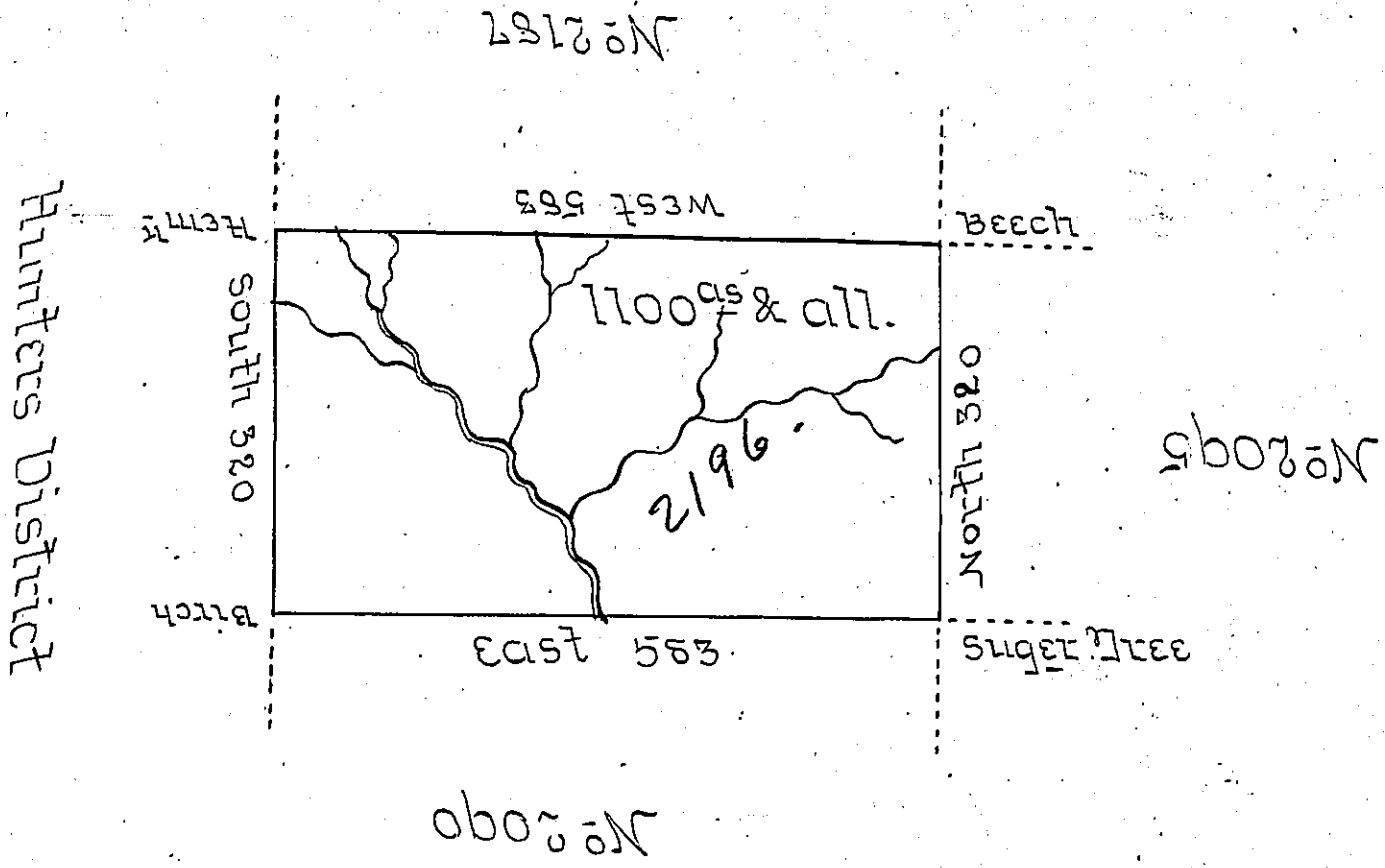


No 22



Situate about two Miles West of (obl.)mada Creek  
 and nine Miles South of the State line obl. North-  
 um County containing 1100 Acres and the usual  
 allowance for Roads &c Surveyed June 15<sup>th</sup> 1795  
 for Robert Gilmore in pursuance of a Warrant  
 No 2196 - bearing date the 12<sup>th</sup> day of December 1792.

John Canon D.S.

Daniel Brodhead Esq 59

IN TESTIMONY that the above is a copy of the original remaining on file in  
 the Department of Internal Affairs of Pennsylvania, made  
 conformably to an Act of Assembly approved the 16th day of  
 February, 1833, I have hereunto set my Hand and caused  
 the Seal of said Department to be affixed at Harrisburg,  
 this eighteenth day of January 1905.

*Isaac B. ...*  
 Secretary of Internal Affairs.